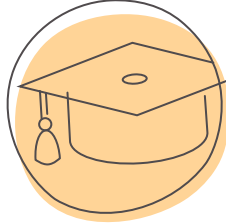
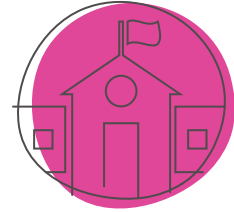




**6,500**  
CHILDREN SERVED  
ANNUALLY



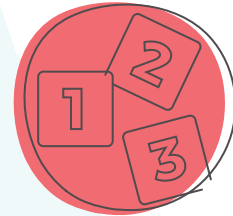
**40,000+**  
ALUMNI



**2**  
CHARTER  
SCHOOLS



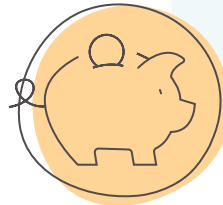
**1,700**  
EMPLOYEES



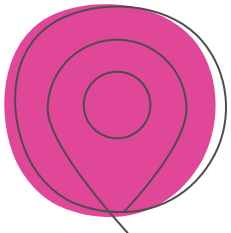
**66**  
CHILD  
DEVELOPMENT  
CENTERS



**25**  
FAMILY CHILD CARE  
HOMES & CHILD CARE  
CENTER PARTNERS



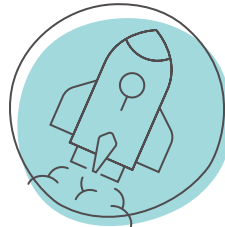
**\$82 MILLION**  
BUDGET



HEADQUARTERED  
IN IMMOKALEE



ACADEMIC  
BILINGUALISM &  
BICULTURALISM  
CURRICULUM



HEAD START  
PROGRAMS



### LET'S BE SOCIAL

Look for **RCMA1965** to follow us on

